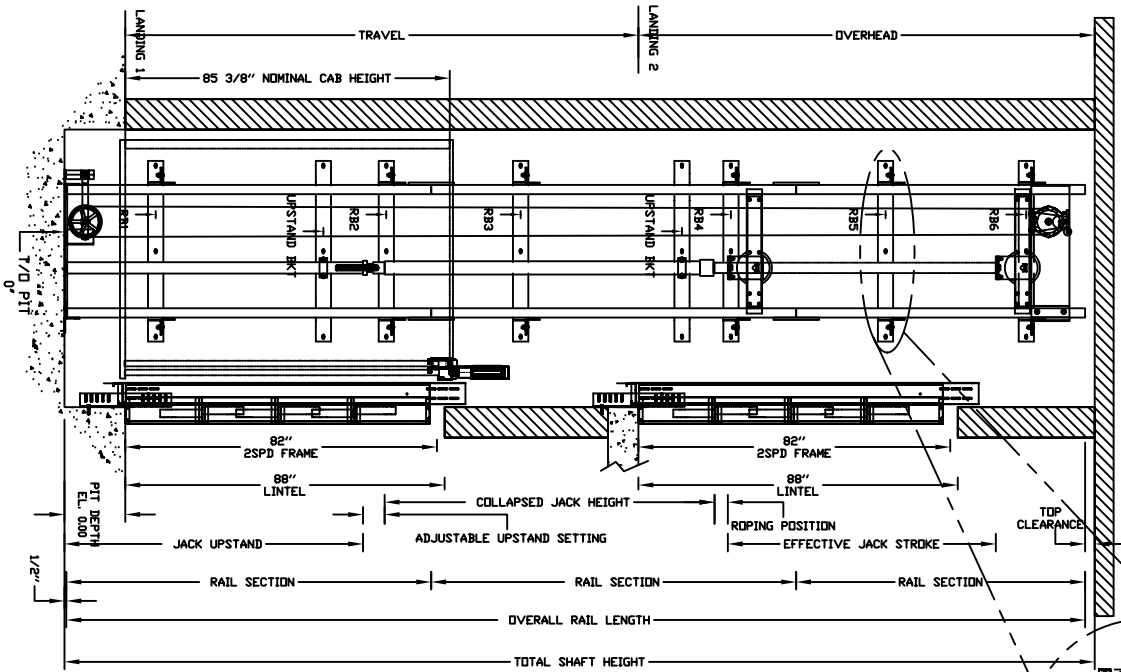


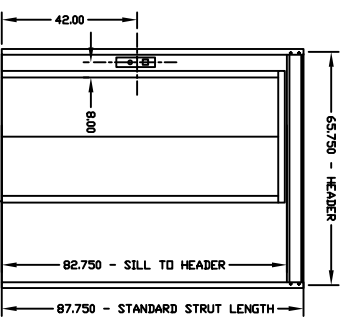
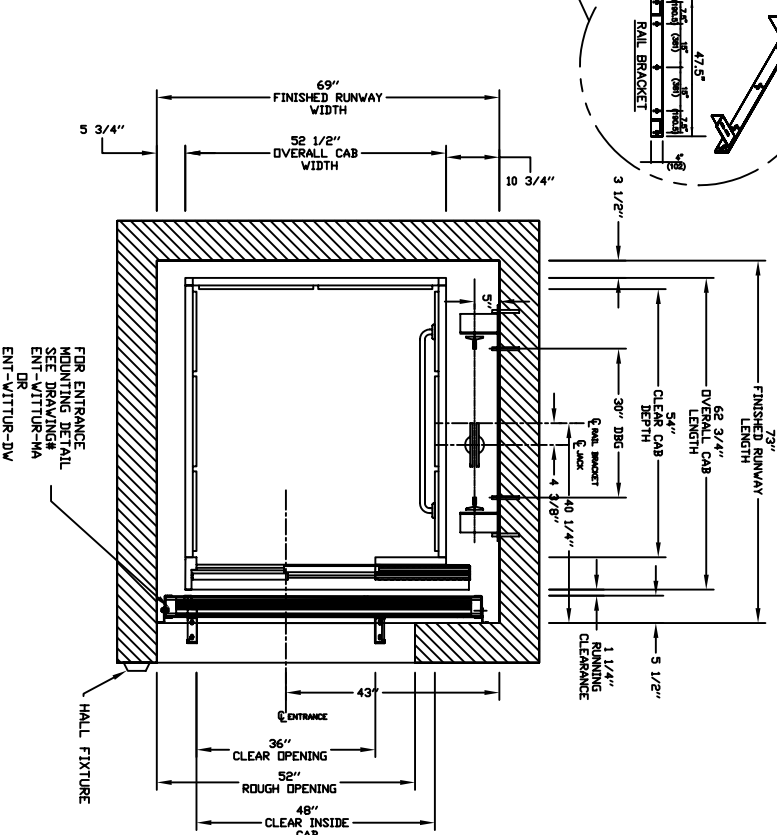
SECTIONAL VIEW - ORION-4854 (1R)



PIT / OVERHEAD REQUIREMENTS	
MAX. SPEED (ft/min)	PIT
30	14\"
TOTAL TRAVEL	NEW BLDG EXISTING BLDG
131\"(3327)	120\"(3048)

*** NOTE: Additional pit equipment required when over 36\" deep. consult your local dealer for details

PLAN VIEW - ORION-4854 (1R) 2 SPEED WITTUR DOORS



RAIL FORCES	R3 NOTE:
*R1	PIT FLOOR TO SUPPORT LOAD OF TO 4000/144000 * (INCLUDES IMPACT)
*R2	R3 TOTAL FULL-OUT FORCE ON RAIL BRACKET. R3 MUST BE DOUBLED @ 144000LS
RAIL WEIGHT: 600 LBS W/ 7 FT	

NOTE: A SMOKE DETECTOR IS REQUIRED, WHEN FROM A NORMAL CLOSEST CONTACT AT BOTH THE DESIGNATED RETURN LANDING, SMOKE DETECTORS AND ALTERNATE RETURN LANDING SMOKE DETECTOR SHALL BE PROVIDED REPRESENTING ALL OTHER SMOKE DETECTORS MUST BE PROVIDED TO THE CONTROLLER.

NOTE: 3. ALL INFORMATION IS SUBJECT TO CHANGE. PLEASE REFERENCE OUR ON-LINE DRAWINGS AT WWW.CONCORD-ELEVATOR.COM FOR THE MOST RECENT UPDATES

PROVISIONS BY OTHERS

***GENERAL**
HOISTWAY - THE HOISTWAY MUST BE IN ACCORDANCE WITH SAFETY CODE FOR ELEVATORS (ASME A17.1 OR B44-2000) AND ALL STATE/PROVINCIAL AND LOCAL CODES.

FLUID HOISTWAY - DUE TO CLOSE RUNNING CLEARANCES DIVNER/AGENT MUST ENSURE THAT HOISTWAY AND PIT (WHERE PROVIDED) ARE LEVEL, PLUMB AND SQUARE AND ARE IN ACCORDANCE WITH THE DIMENSIONS ON THESE DRAWINGS.

MINIMUM OVERHEAD CLEARANCE - DIVNER/AGENT MUST ENSURE MINIMUM OVERHEAD CLEARANCE IS IN COMPLIANCE WITH CODES.

CONSTRUCTION SITE - DIVNER/AGENT TO PROVIDE ALL MASONRY, CONCRETE AND BRICKLAYER WORK AS REQUIRED AND SHALL PATCH AND MAKE SURE ALL REPAIRS TO BRICKS AND BLOCKS ARE MADE IN ANY WAY TO PERMIT THE PROPER INSTALLATION OF THE LIFT.

STRUCTURAL - CONTRACTOR/CUSTOMER TO VERIFY ALL DIMENSIONS AND REPORT ANY DISCREPANCIES TO OUR OFFICE IMMEDIATELY.

ELDER/SUPPORT WALL LOADS - STRUCTURAL ENGINEER TO ASSURE THAT BUILDING AND SHAFT WALL SAFETY SUPPORT ALL LOADS IMPOSED BY THE LIFT EQUIPMENT. REFER TO THE TABLES ON THIS DRAWING FOR LOADS IMPOSED BY THE EQUIPMENT.

DOORS - SUITABLE LINTELS MUST BE PROVIDED BY DIVNER/AGENT. DOOR FRAMES ARE NOT DESIGNED TO SUPPORT OVERHEAD WALL LOADS.

MACHINE ROOM
 LOCATION / ACCESS - MACHINE ROOM LOCATED AT THE LOWEST LEVEL ADJACENT TO HOISTWAY UNLESS SHOWN OTHERWISE ON THE LAYOUT DRAWINGS. FIELD ADJUSTMENT BRASS/FLATNER MAY BE NECESSARY TO MEET JOB SITE CONDITIONS OR REGULATIONS. ACCESS TO MACHINE ROOM TO BE THROUGH A SELF CLOSING AND SELF LOCKING DOOR.

SLEEVES FOR OIL & ELECTRIC LINES - PROVIDED BY OTHERS, FROM MACHINE ROOM TO HOISTWAY. POSITION PER INSTALLERS INSTRUCTIONS.

INPUT VOLTAGE	DISCONNECT	THE DELAY	FULL LOAD
(V/PH/CH/CD)	SIZE (AMPS)	FUSE (AMPS)	CURRENT (AMPS)
MOTOR INED	208/3PH/60HZ	30	30
	230/1PH/60HZ	60	50
CAB LIGHTS	115/1PH	15	21

***ELECTRICAL**

POWER SUPPLY - (SEE SPECIFICATIONS) LOCKABLE FUSED DISCONNECT WITH AUXILIARY CONTACT TO BRAKE THE BATTERY FEED OR CIRCUIT BREAKERS WITH A 3-POLE BREAKER FOR BATTERY FEED REQUIRED, IN COMPLIANCE WITH ELECTRICAL CODE, AS FOLLOWS:
 (LOCATED ON WALL ON LOCK JAMB SIDE OF MACHINE ROOM DOOR)
PERMANENT POWER - BEFORE INSTALLATION CAN BEGIN. PERMANENT POWER MUST BE SUPPLIED.

LIGHTING - DIVNER/AGENT TO ENSURE AT LEAST 5 FTc OR 54 LUX AMBIENT LIGHTING OVER ELEVATOR AREA.

ENTRANCES
 FASCIA PANEL BELOW UPPER LEVEL ENTRANCE, WHERE REQUIRED, MUST BE FASTENED TO THE FLOOR AND WALLS HOISTWAY AND BE PERPENDICULAR TO THE FLOOR AND WALLS HOISTWAY.
 FASCIA IS NOT SELF-SUPPORTING FOR LONG CONTINUOUS RUNS. VOID OF ENTRANCES. ADEQUATE SUPPORT AND THE FASCIA MUST BE PROVIDED BY OTHERS.

ENTRANCE ASSEMBLIES - ENTRANCE ASSEMBLIES MUST BE ADJUSTED TO ALIGN WITH PLAYFORM AND INTERLOCK EQUIPMENT. OTHERS TO ALLOW AN ADEQUATE ROUGH OPENING.

RETURN WALLS - RETURN WALLS AT ENTRANCES MUST BE BUILT-IN BY OTHERS AFTER ENTRANCE ASSEMBLIES ARE IN PLACE. ENTRANCE ASSEMBLY MUST BE SECURELY FASTENED TO WALLS BY ELEVATOR CONTRACTOR.



LU/LA
 ORION MODEL 4854 (1R)

REV-000